

Philadelphia Regional Port Authority



Philadelphia Regional
Port Authority



AAPA Executive Management Conference
Latin America and the Caribbean

Philadelphia Regional Port Authority



Philadelphia Regional
Port Authority

- A Pennsylvania state agency, PRPA owns six terminals on the Delaware River in Pennsylvania.
- Terminals are leased to private operators. PRPA provides maintenance, marketing, and other services.



PRPA Terminals



Philadelphia Regional
Port Authority

- 4,000,000 square feet (371,612 sq. m.) of warehouse space.
- 18,105 linear feet (5,518 m.) of berthing space.
- 28 designated berths.



PRPA Terminals

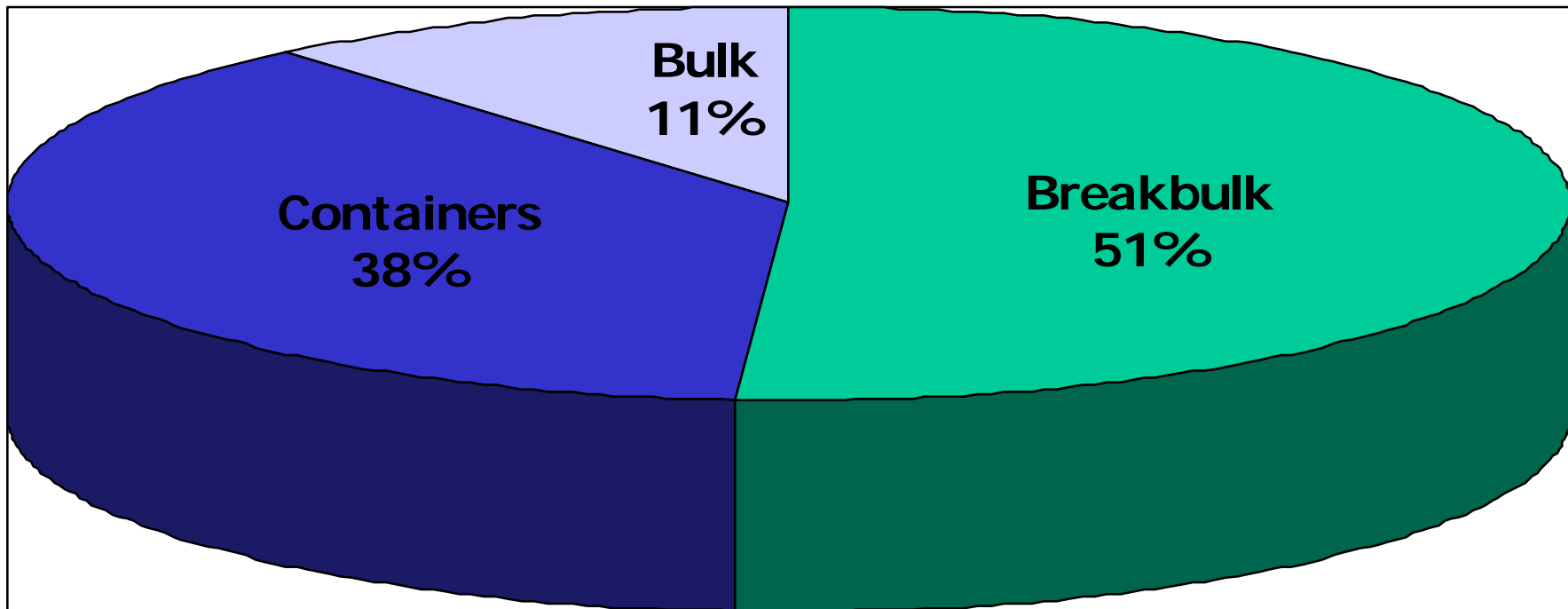


- 4.3 million tons of cargo, including 247,211 TEUs, passed through PRPA facilities in 2006.
- In 2006, PRPA facilities worked over 505 merchant ships.

Types of Cargo



Philadelphia Regional
Port Authority

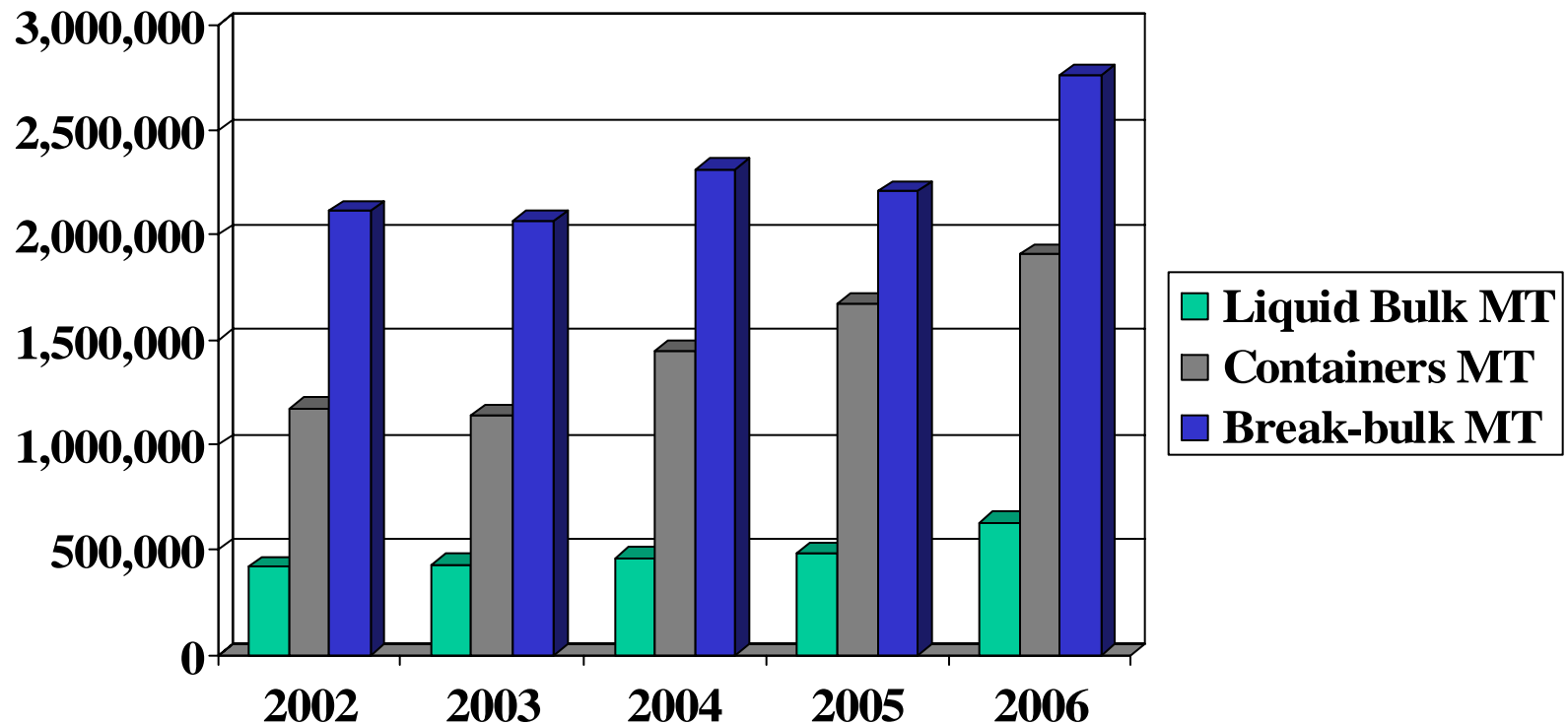


PRPA Terminals, 2005

Total Cargo Increased 2002 - 2006



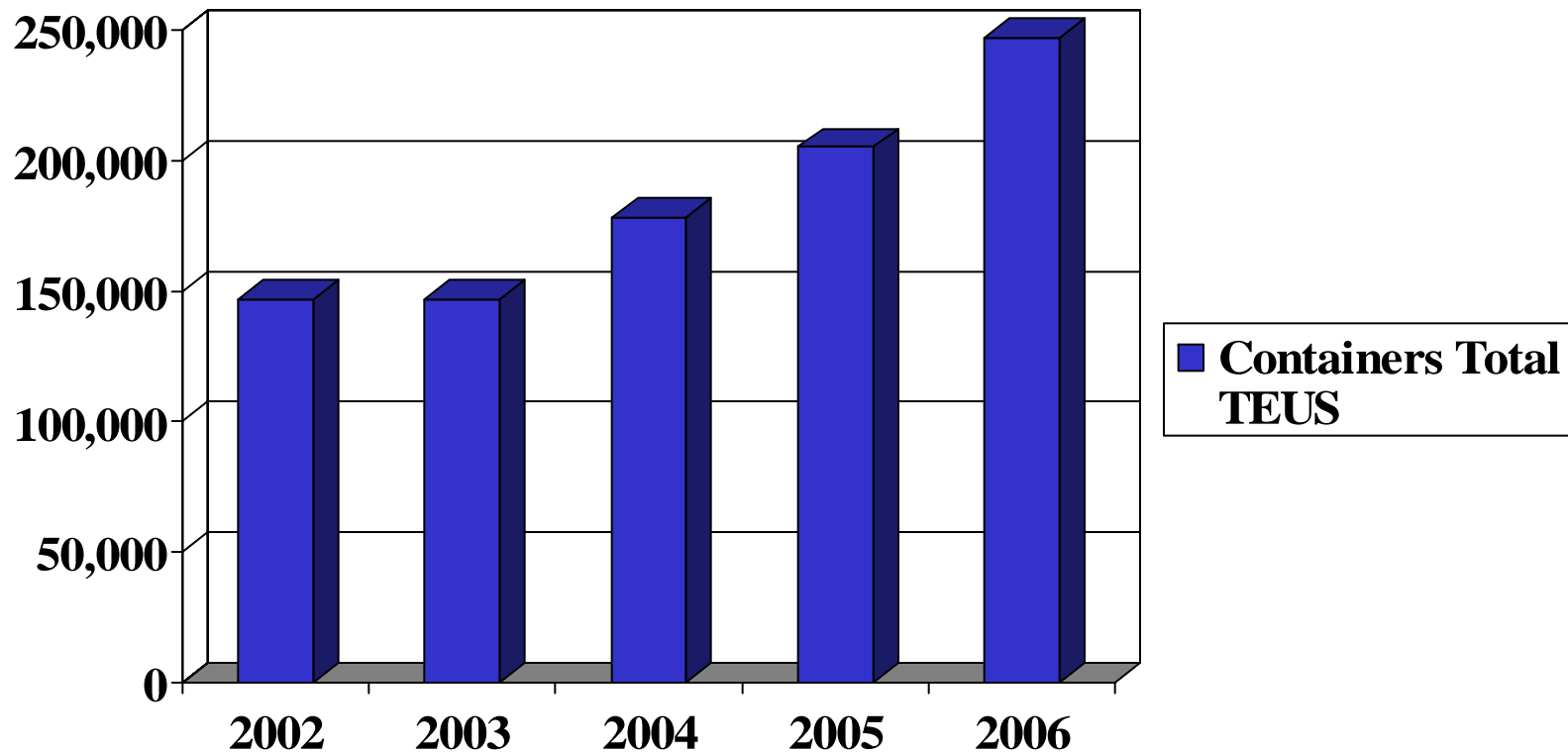
Philadelphia Regional
Port Authority



Container Volume Increased 2002-2004



Philadelphia Regional
Port Authority



Packer Avenue Marine Terminal



Philadelphia Regional
Port Authority



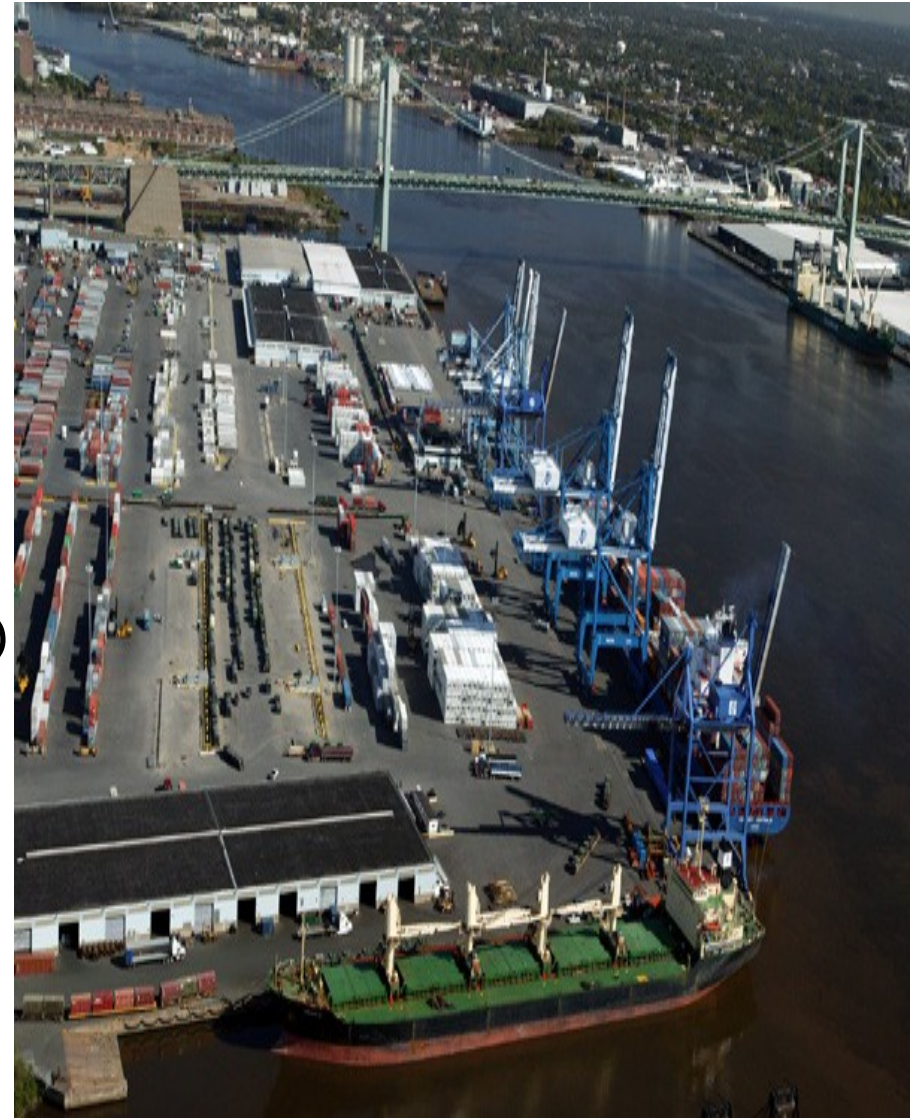
Packer Avenue Marine Terminal

Containers, Steel, Frozen Meat, Heavy Lift, Project



Philadelphia Regional
Port Authority

- Terminal Area: 106 Acres
- 290,000 sq.ft. dry/heated warehousing capacity
- 2,200,000 cu.ft. refrigerated warehousing capacity
- 1160 Reefer Plugs
- 7 container cranes (45-375 Tons)
- Heavy lift capabilities direct to truck/rail
- Close access to highways
- On-dock rail capabilities



PAMT Facility Improvements - \$25 Million



- Two new, post-Panamax 65 l.t. Hyundai container cranes, with twin 20 foot lift capability
- 1,350 fixed reefer plugs including remote monitoring
- Improvements to 260,000 sq. ft. (24,155 sq. meters) of on-dock warehousing space
- Planned, new Automated Container Gate including digitized pre-gate portals and expedited processing times
- Security upgrades to include video surveillance, access control and perimeter barriers

Current Layout of Existing Container Infrastructure



Philadelphia Regional
Port Authority



SouthPort Development Plan



Philadelphia Regional
Port Authority



SouthPort Development Details



- 90 - 140 acres (36.4 – 56.7 hectares)
- 2,500 linear feet (762 meters)
- 45 foot berth depth (13.7 meters)
- Contiguous to 1,200 acre Philadelphia Naval Business Center planned to be a distribution and warehouse complex
- Environmental permitting process
 - Aquatic life analysis
 - 40 acres (16.2 hectares) environmental mitigation
 - 6 - 9 million cu. yards (5,734,161 cu. meters) of fill required

Channel Deepening Project



Philadelphia Regional
Port Authority

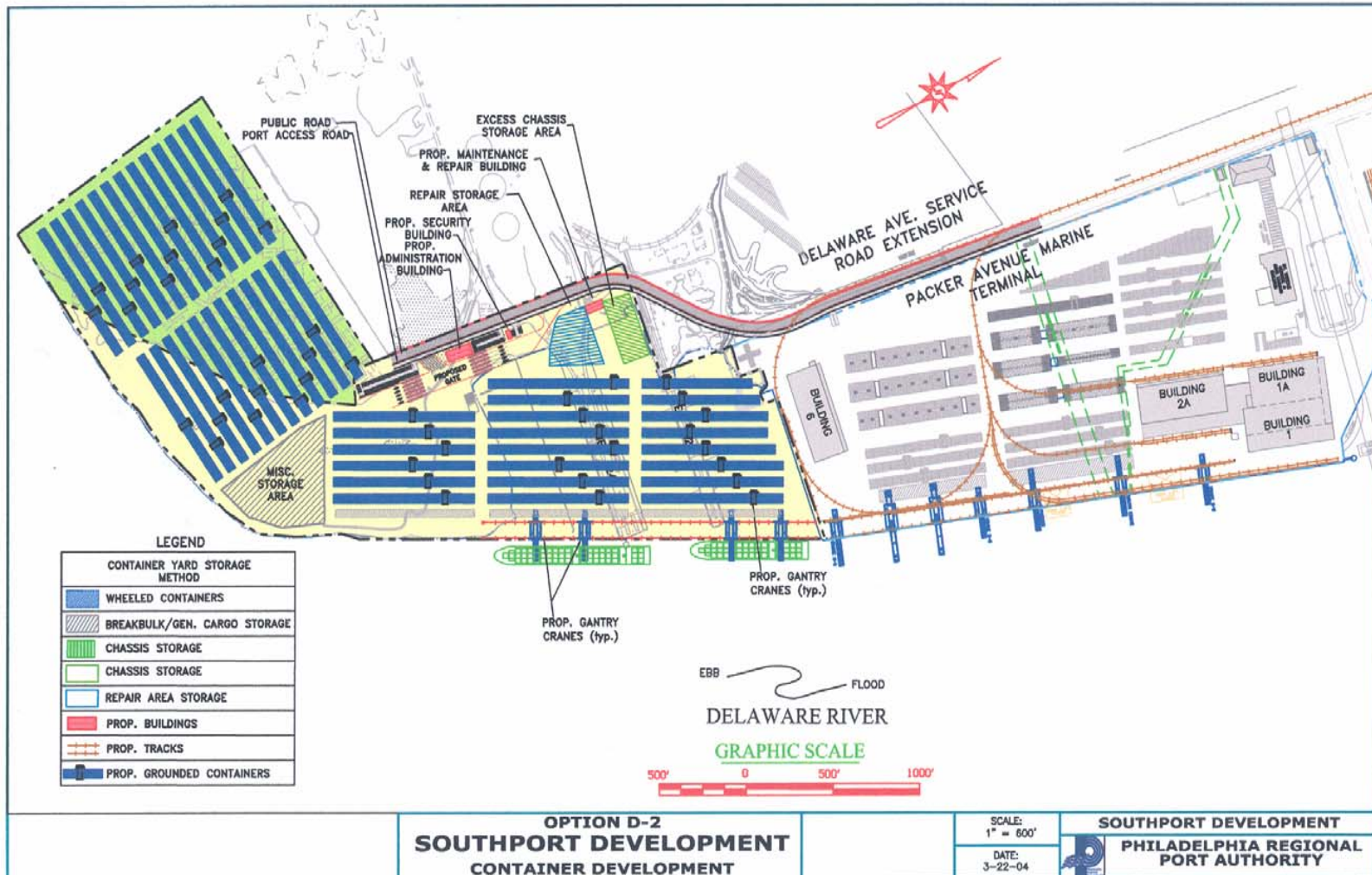


- The main ship channel of the Delaware River will be deepened from its existing 40 feet (12.2 meters) to 45 feet (13.7 meters) between a distance of 109.4 kilometers
- 27 million cubic yards of dredged material
- Approximately \$265 million project; local match of \$76 million
- Final environmental review is in process by three states
- Project Cooperation Agreement expected to be signed shortly

Full Container Layout: RTG Configuration



Philadelphia Regional
Port Authority



Estimated annual throughput under this configuration: 490,000 TEUs

Pier 84

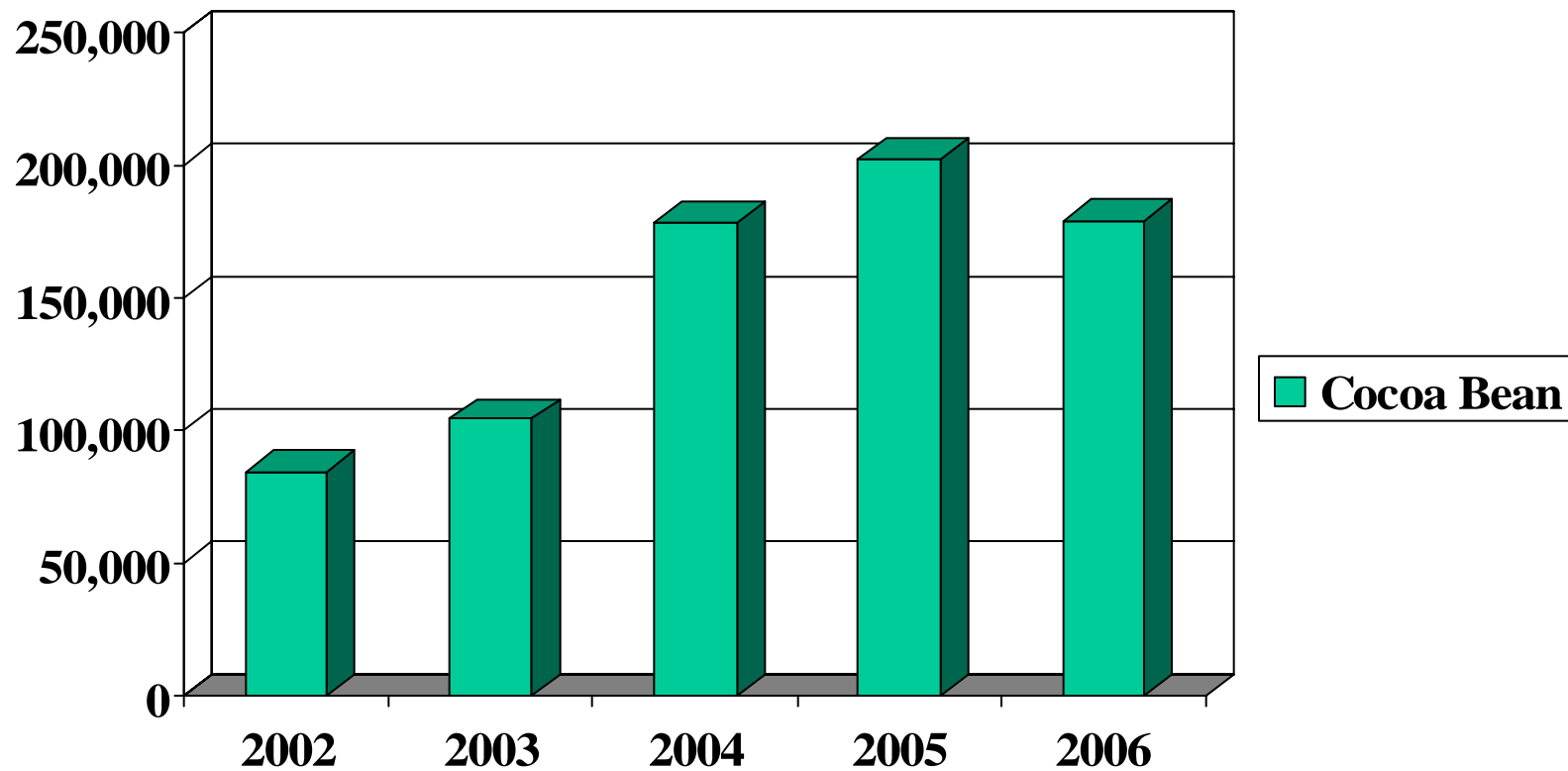


- Primary cargoes: Cocoa beans and cocoa products
- 2005 Total Tonnage: 202,058 M/T
- 855 linear feet (260.6m.) of berthing space
- 540,000sq.ft. (23,250 sq. m.) of warehousing

Cocoa Bean Statistics 2002 - 2006



Port Authority



Piers 78/80 and 38/40

Forest Products Facility



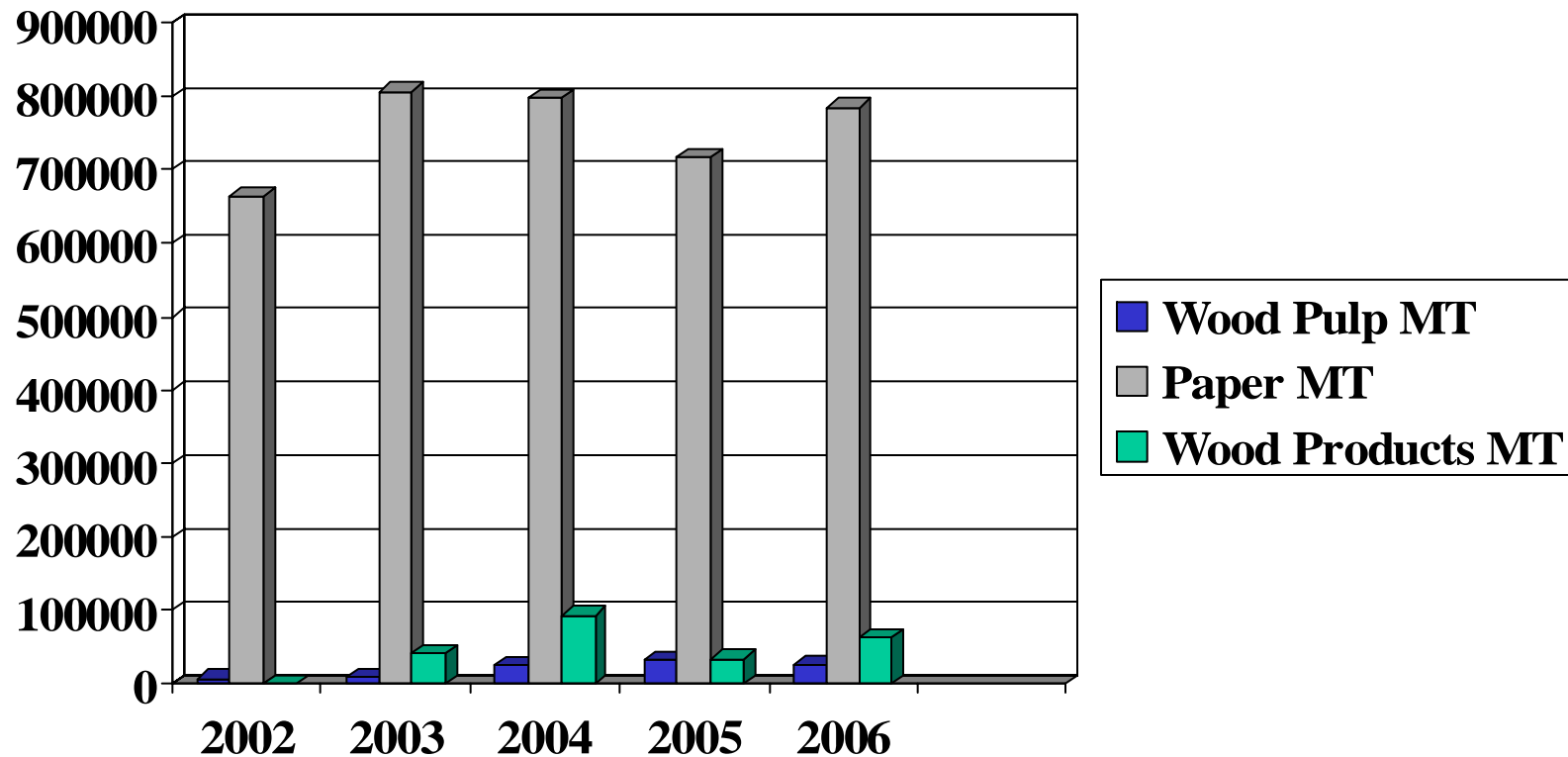
- Terminal Area: 51.8 Acres
- 1.3 million square feet of warehouse capacity
- Ro/Ro capabilities
- Close access to highways
- On-dock rail capabilities
- Designated Foreign Trade Zone



Forest Product Totals 2002 - 2006



Philadelphia Regional
Port Authority



Forest Products via Philadelphia



Philadelphia Regional
Port Authority

- 796,700 tons of paper
- 25,500 tons of pulp
- 15,700 tons of lumber
- 93,400 tons of other forest products



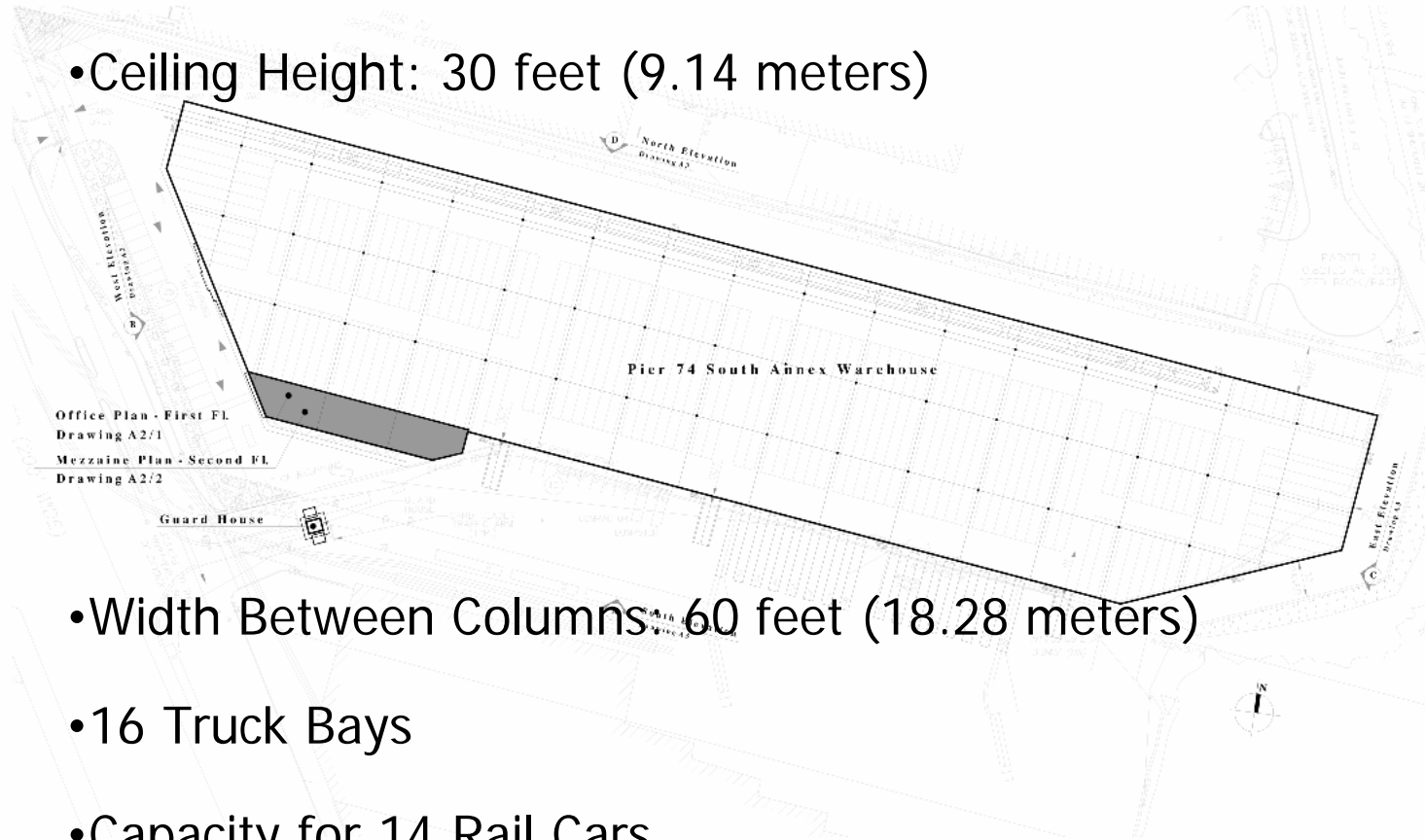
931,300 tons of forest products
via Philadelphia in 2005

Pier 74: New Paper Warehouse



Philadelphia Regional
Port Authority

- Total Area: 150,000 ft² (13,935 m²)
- Ceiling Height: 30 feet (9.14 meters)



- Width Between Columns: 60 feet (18.28 meters)
- 16 Truck Bays
- Capacity for 14 Rail Cars

SouthPort Development Plan



Philadelphia Regional
Port Authority



Future Expansion



Philadelphia Regional
Port Authority



NorthPort Expansion



Philadelphia Regional
Port Authority



Tioga Marine Terminal

Perishables, Forest Products, Containers, Breakbulk,
Steel

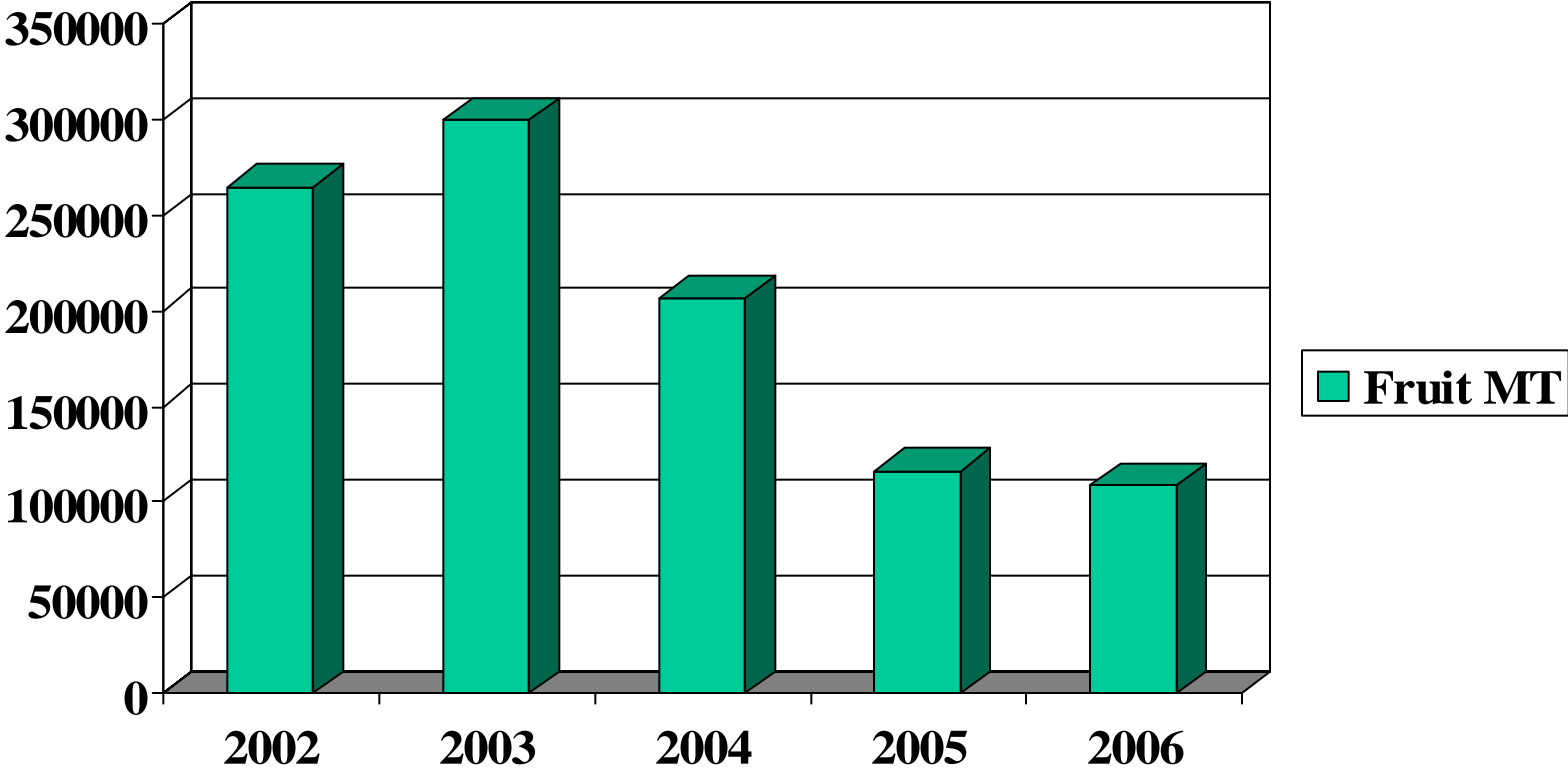


Philadelphia Regional
Port Authority

- Terminal Area: 96.5 Acres
- 527,000 sq.ft. of total warehouse capacity (heated and cold storage)
- 180 Reefer Plugs
- 2 gantry cranes (45 tons each)
- Close access to highways
- On-dock rail capabilities



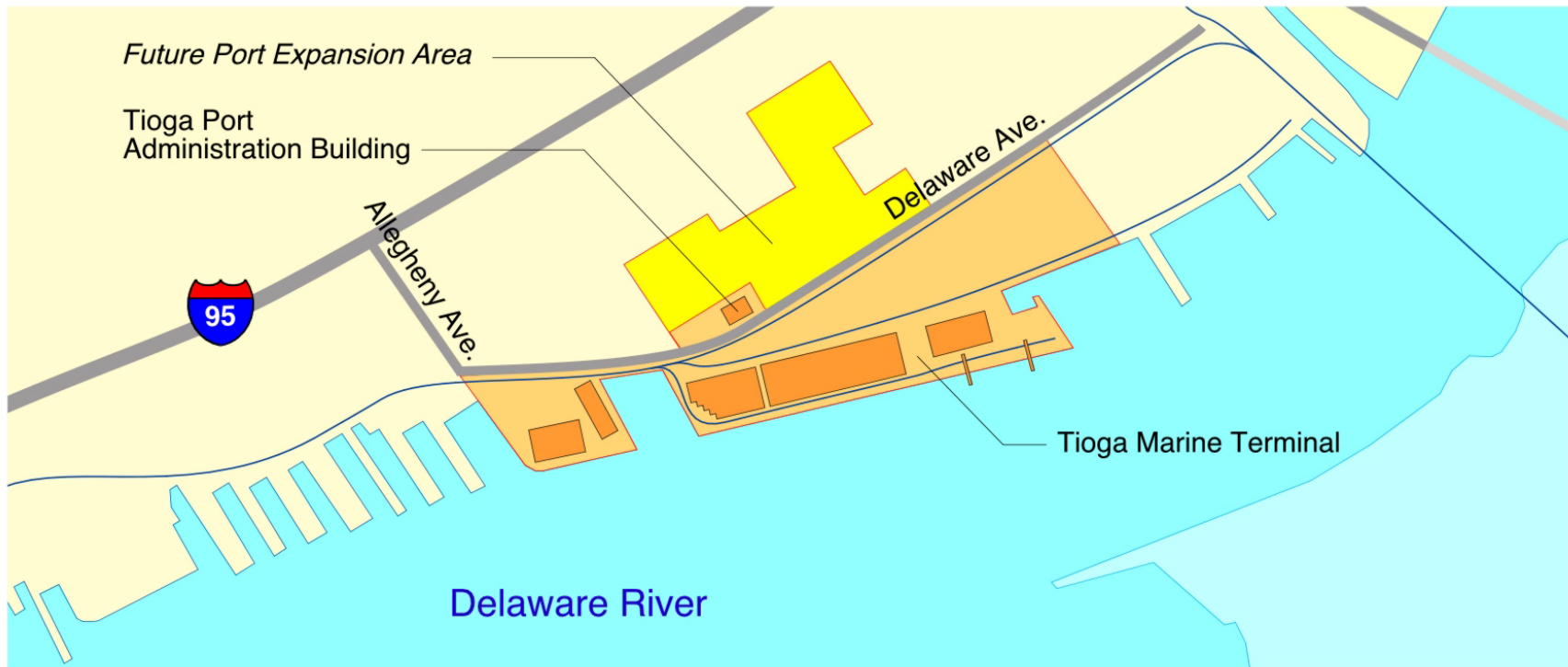
Fruit Statistics 2002 - 2006



Port Richmond



Philadelphia Regional
Port Authority



Questions / Comments?



Philadelphia Regional
Port Authority

James B. Walsh
Director of Operations
Philadelphia Regional Port Authority
215-426-2600
jwalsh@philaport.com